

## RPC-C Compact Palletizer

The Compact Palletizer is Pearson Packaging Systems' smallest yet fully contained palletizing cell ideal for a single production line running one SKU at a time. Sealed cases/trays and bliss boxes are top picked onto a single pallet. The load/unload function utilizes a pallet jack or forklift. The cell comes pre-assembled on a common base for easy placement and start-up. The modular configuration offers various infeed configurations to choose from to better accommodate your plant layout.



<b>Speed</b>	Up to 12 cases/min
<b>Min. Case Size Base Machine</b>	9" (L) x 5" (W) x 6" (H)
<b>Max. Case Size Base Machine</b>	17.5" (L) x 15" (W) x 20" (H)
<b>Max. Case Weight</b>	Up to 40 lbs
<b>Changeover</b>	Easy-to-use pallet configuration tool to create, modify, copy or clear new pattern recipes on the HMI.
<b>Machine Size Range (ft)</b>	10.3 (L) x 7.5 (W) x 8.3 (H)
<b>Controls</b>	Allen-Bradley PLC PackML Compliant PanelView Color HMI
<b>Air Requirements</b>	80 PSI
<b>Power Requirements</b>	460 VAC
<b>Disconnect Sizes</b>	60 Amps

### Standard Features

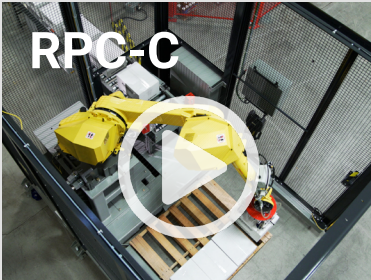
- HMI with User Centric Design
- Pallet Configuration Tool
- Easily Accessible Grace Port
- Remote Access Support Capability

### Popular Upgrade Options

- Air-Conditioner
- Low-Temp Environment
- Plant Level Ethernet Connection
- Vacuum Pump

## Resources

To view videos or download floorplans of the base machine, please click on the links



RPC-C Configuration 01

PDF | DWG

RPC-C Configuration 03

PDF | DWG

RPC-C Configuration 02

PDF | DWG

RPC-C Configuration 04

PDF | DWG

Standard Component List



Ewon Remote Access Router Information

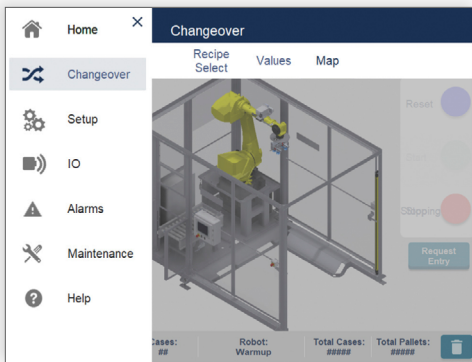


## User Centric Design

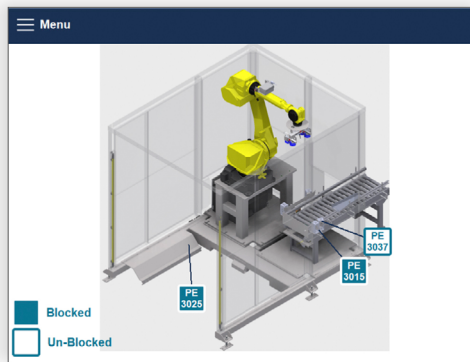
**Minimize training time | Increase changeover and fault-recovery speed | Promote improved machine maintenance**

Machine operators that perform their tasks independently free up maintenance time and keep lines running smoother. Yet frequent turnover, language barriers, and skill gaps in these positions pose significant challenges to operations teams asked to meet production goals while reducing costs in the process. Pearson's User Centric Design is there to help.

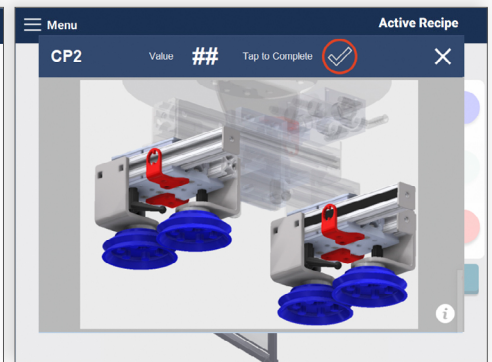
With an uncluttered design, intuitive navigation, interactive guides, live sensor maps and advanced maintenance features, the HMI has morphed into a personal assistant.



Main Navigation



Sensor Map Screen



Changeover Instructions



**Not just a  
great product  
but a reliable  
partner**

- Find reliable, thought-out solutions based on 60 years of experience | 30 years of robotic integration
- Expect a rugged machine design optimized for high-volume 24/7 operations
- Optimally support a high-turnover labor force with an intuitive Human Machine Interface (HMI)
- Benefit from a uniform user interface for your erecting, packing, sealing, and palletizing equipment
- Experience premier industry lead-times for faster delivery and shorter down-payment cycles
- Depend on our project managers to provide ongoing visibility to meet delivery timelines and budgets
- Count on comprehensive sales, aftermarket, and service support
- Rely on extensively trained and FANUC Certified technicians to service your equipment
- Always lean on us for 24/7 live service support