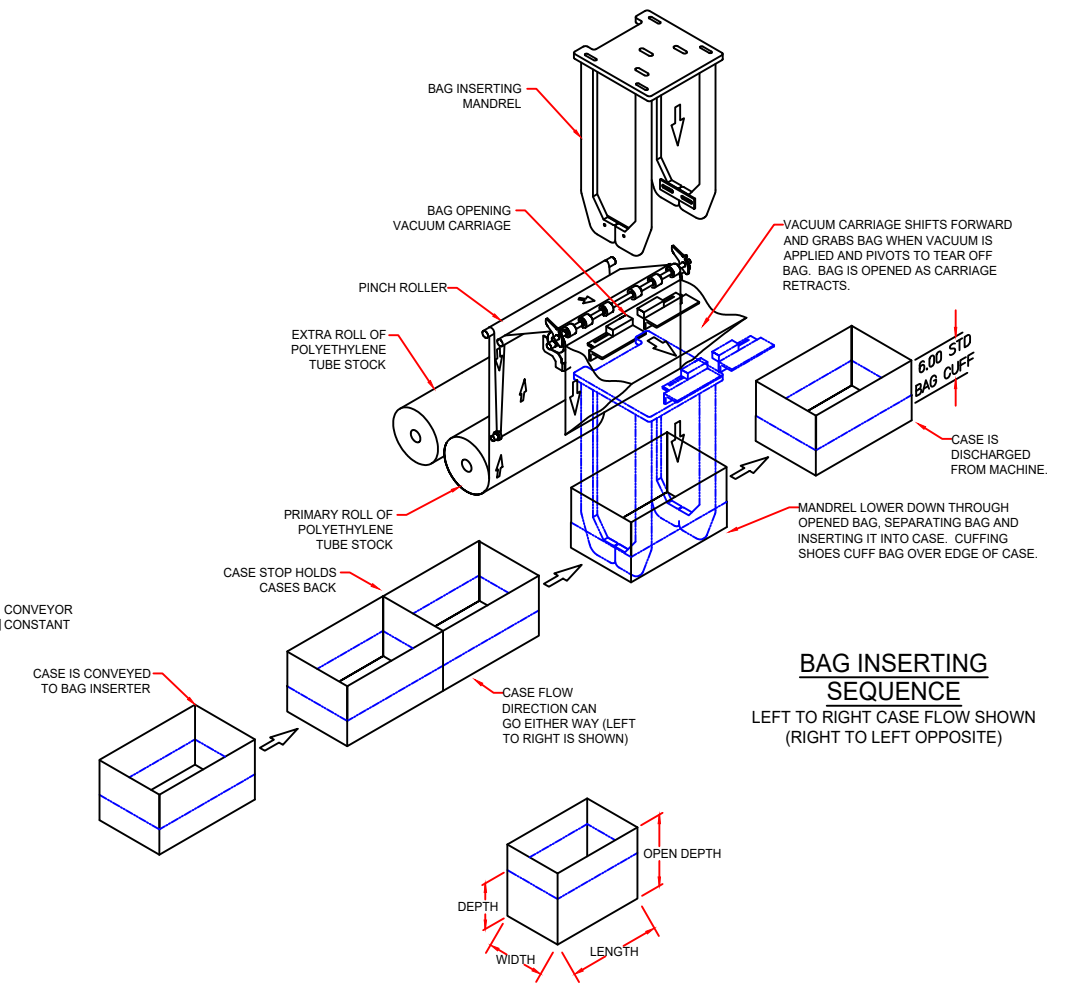


PLAN VIEW



BAG INSERTING SEQUENCE  
LEFT TO RIGHT CASE FLOW SHOWN (RIGHT TO LEFT OPPOSITE)

ERECTED CASE SIZE

CASE	LENGTH	WIDTH	DEPTH	OPEN DEPTH
MINIMUM	9.5 (241mm)	9.5 (241mm)	N/A	10.0 (254mm)
MAXIMUM	24.0 (610mm)	17.0 (432mm)	N/A	24.0 (610mm)

GENERAL BAG INFORMATION

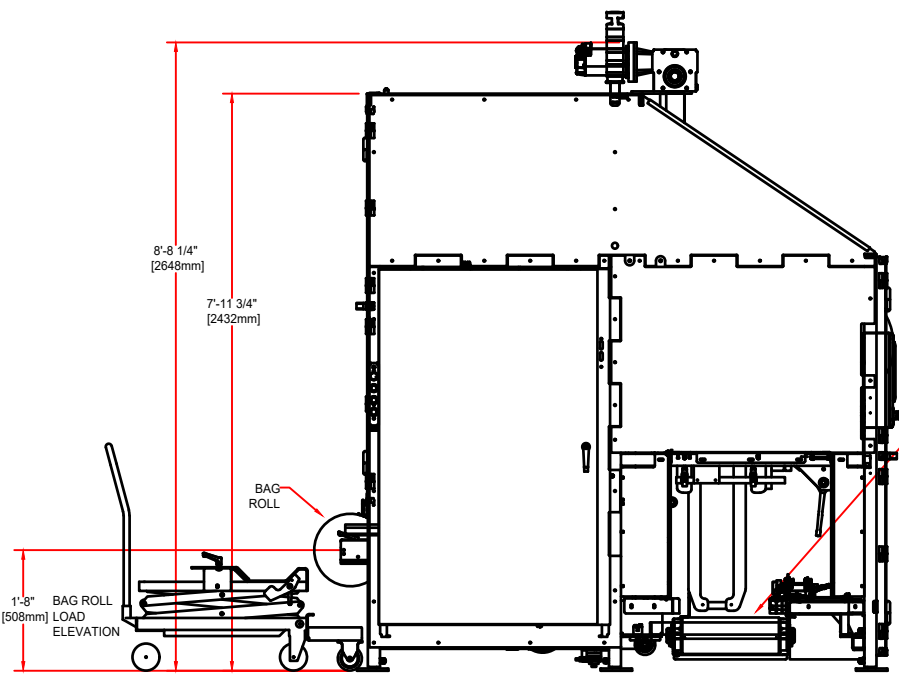
BAG ROLL: CORE I.D. - 3"  
 MAX O.D. - 12" (14" W/ OPTION)  
 MAX WIDTH - 32"  
 FILM THICKNESS - 1.25 MIL MIN  
 TO 2.99 MIL MAX (4.00 W/ OPTION)

UTILITY REQUIREMENTS

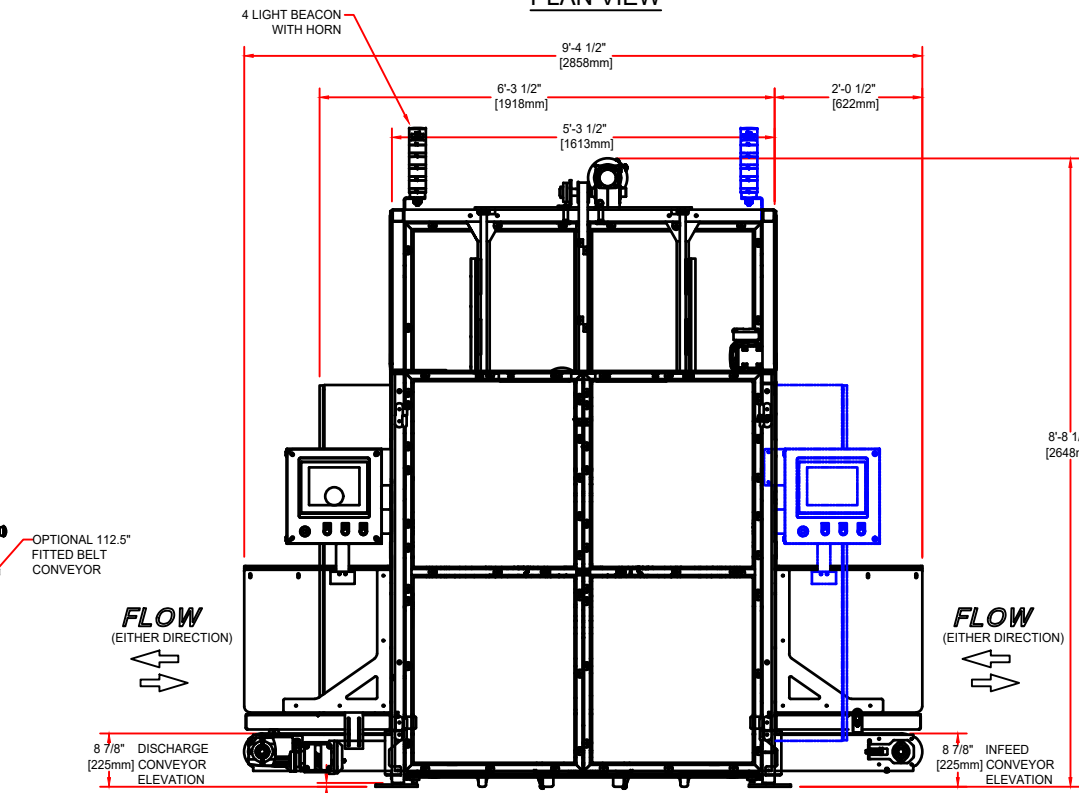
AIR REQUIREMENTS: 0.67 SCF/CYCLE @ 80 PSI (0.019m³ PER CYCLE @ 551.2 KPa)  
 ELECTRICAL REQUIREMENTS: 460 VOLTS, 3 PHASE, 60 Hz  
 FULL LOAD AMPS - 43.0 AMPS  
 DISCONNECT SIZE - 60 AMPS

POWER REQUIREMENTS PROVIDED ARE FOR A BASE MACHINE AND CUSTOM OPTIONS MAY RESULT IN CHANGES.

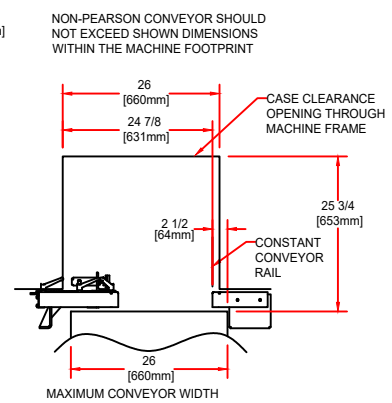
ESTIMATED MACHINE WEIGHT: 3200 LBS. (1452 KG)  
 MACHINE SPEED: SEE ORDER SPECIFICATIONS



SIDE VIEW



ELEVATION VIEW



STANDARD CONVEYOR ELEVATIONS ARE 8.88" TO 15". ELEVATIONS UP TO 40" ARE ACHIEVABLE WITH THE ADDITION OF LEG EXTENSION KITS.

5/8" [16mm] SHOWN  
 0' - 1/2" [13mm] TO 0' - 11" [279mm] ADJUSTABILITY

**PRELIMINARY**  
 (ALL DIMENSIONS ARE APPROXIMATE AND MAY VARY WITH FINAL DESIGN)

PROPRIETARY  
 NEITHER THIS DOCUMENT NOR THE INFORMATION CONTAINED THEREIN MAY BE REPRODUCED OR DISCLOSED TO ANYONE WITHOUT THE WRITTEN PERMISSION OF R.A. PEARSON CO.

DATE	REVISION	ECN NO.	REV. BY	CHKD BY
2/5/25	OPTIX 2800 10 INCH, WAS PV +1000		T.V.	
1/12/24	UPDATED UTILITY REQUIREMENTS		T.V.	
3/6/18	UP-DATE ELEC UTILITY INFO, PV 1000 WAS 700		K.A.	
4/14/20	LEFT AND RIGHT SIDE NOW DETERMINED AS YOU FACE THE CONVEYOR/HMI SIDE OF MACHINE		K.A.	
6/3/14	PV +6 7 INCH WAS PV 600 HMI		K.A.	
2/3/14	UP-DATED VIEWS FROM CURRENT 3D MODEL		K.A.	
9/6/12	UP-DATED ELECT UTILITY INFO.		K.A.	

2' - 2 7/16" 672

DIMENSIONS ARE IN FOOT FRACTION INCH OVER MILLIMETERS.

**PEARSON** MEDICAL SYSTEMS  
 4125 WEST SUNSET HIGHWAY  
 SPOKANE, WASHINGTON 99224  
 WWW.PEARSONPKG.COM

TITLE: **BI25 BAG INSERTER**

DR. [ ] DWG NO. **D517605**

CHK. [ ]

APP. [ ] SCALE [ ] SHEET [ ]